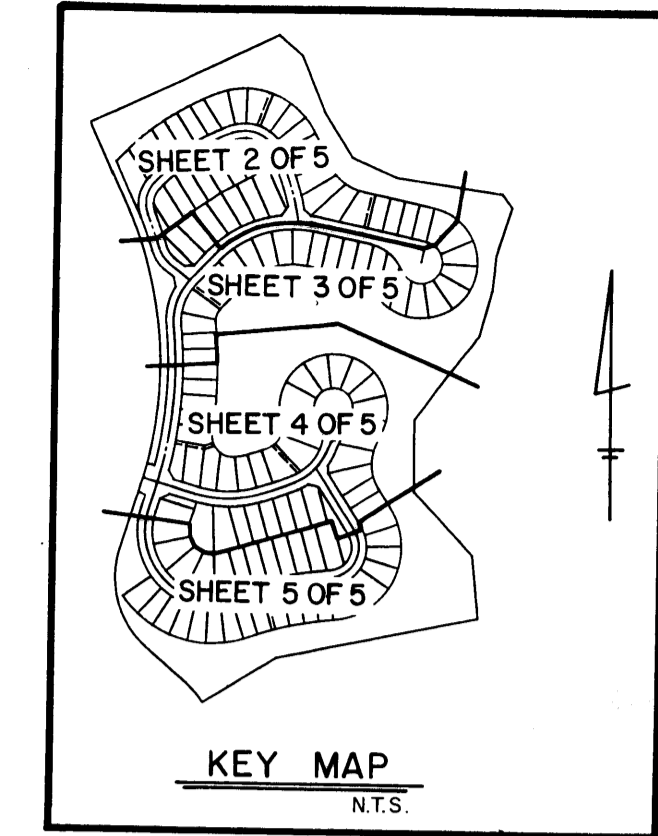


# A PLAT OF PARCEL 61 AT THE MEADOWS

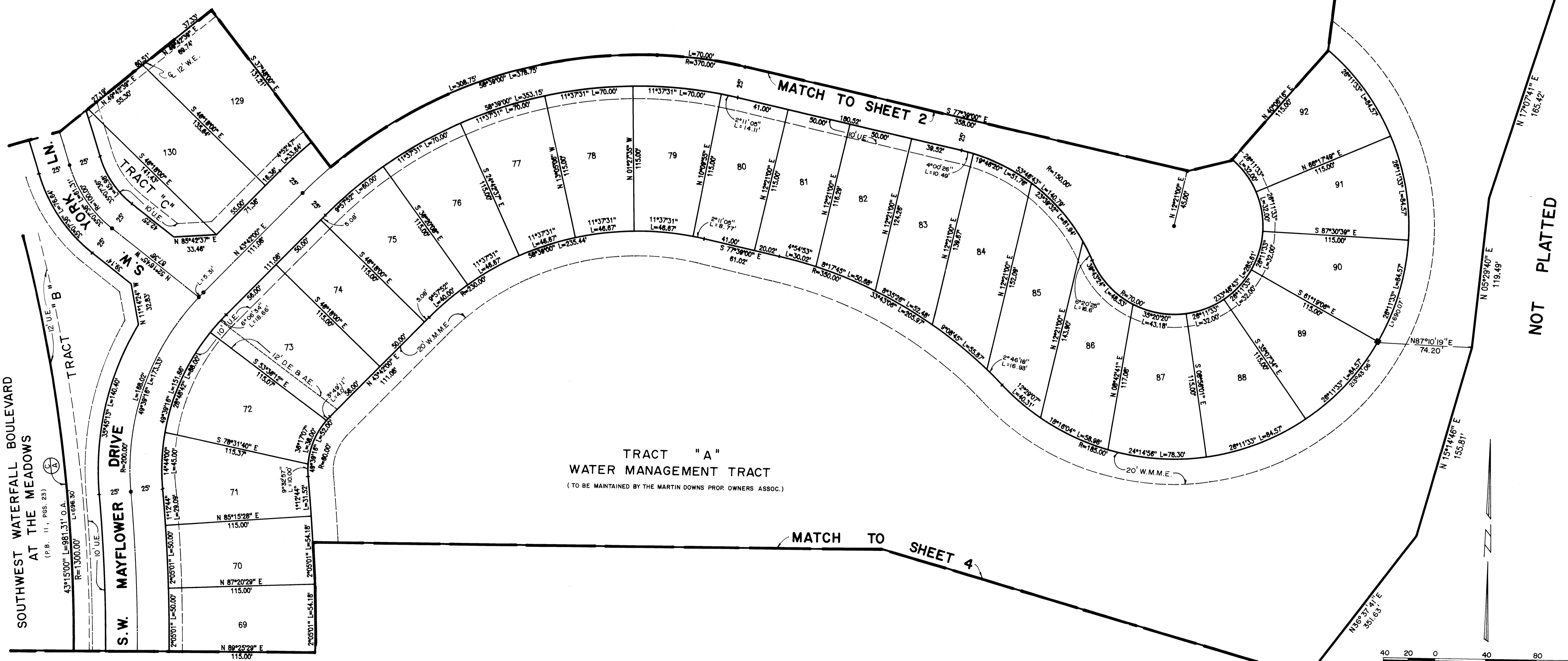
BEING PLAT NO.49 OF MARTIN DOWNS A P.U.D.  
LYING IN SECTION 12, TOWNSHIP 38 SOUTH, RANGE 40 EAST  
MARTIN COUNTY, FLORIDA.

SHEET 3 OF 5

FEBRUARY, 1989.

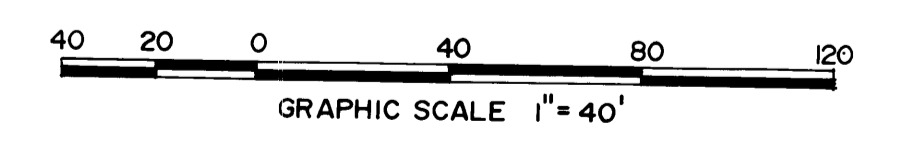


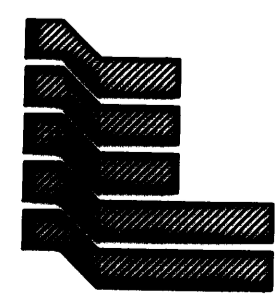
I, MARSHA STILLER, CLERK OF THE CIRCUIT COURT OF MARTIN COUNTY, FLORIDA, HEREBY CERTIFY THAT THIS PLAT WAS FILED FOR RECORD IN PLAT BOOK 11, PAGE 95, MARTIN COUNTY, FLORIDA. PUBLIC RECORDS, THIS DAY OF \_\_\_\_\_ A.D. 19\_\_\_\_.  
MARSHA STILLER, CLERK OF CIRCUIT COURT MARTIN COUNTY, FLORIDA  
By: \_\_\_\_\_ DEPUTY CLERK  
FILE NO. \_\_\_\_\_



TRACT "A"  
WATER MANAGEMENT TRACT  
(TO BE MAINTAINED BY THE MARTIN DOWNS PROP. OWNERS ASSOC.)

NOT PLATTED



 **Landmark Surveying & Mapping Inc.**  
1850 FOREST HILL BOULEVARD  
PH. (305)433-5405 SUITE 100 W.P.B. FLORIDA

---

**PARCEL 61 AT THE MEADOWS**

SOUTHWEST WATERFALL BOULEVARD  
AT THE MEADOWS

S.W. MAYFLOWER DRIVE

YORK LN

MATCH TO SHEET 4

MATCH TO SHEET 2